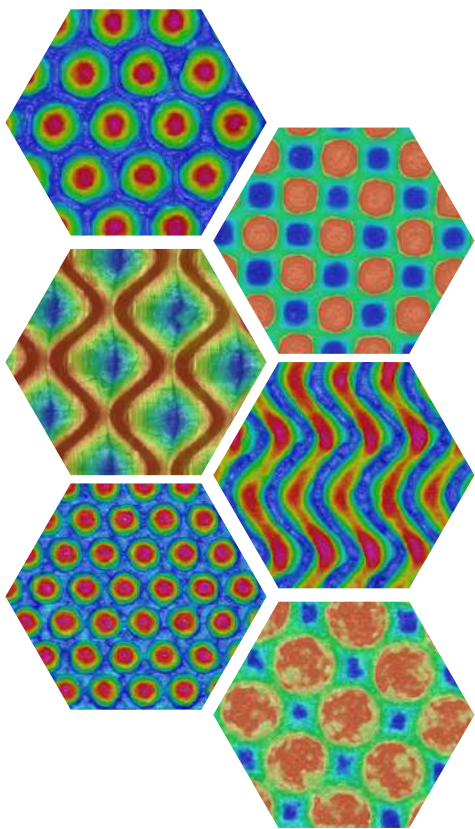


**Ultimate** solution in print quality control

# AniCAM HD™ *Plus*

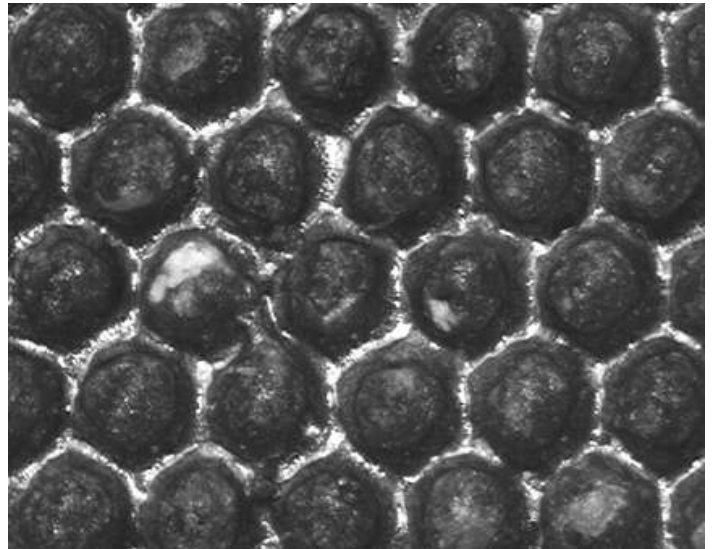


**Introducing the AniCAM HD *Plus* from Troika Systems –**  
*With advanced hardware and intuitive software, revolutionise how you monitor and enhance print quality. Experience unmatched accuracy, efficiency, and profitability with Troika Systems latest innovation.*

# What's new in the AniCAM HD™ Plus

## High-Resolution Image Sensor

Our new image sensor, boasting an impressive 1024x768 resolution, captures details with unprecedented clarity. This results in sharper, clearer images and heightened measurement accuracy, contributing to the precision of your work.



## Kinematic Lenses

Quickly adjust magnification levels with our new kinematic lenses. Magnets lock and release the lenses, ensuring consistent and accurate measurements every time.

## And Much More...

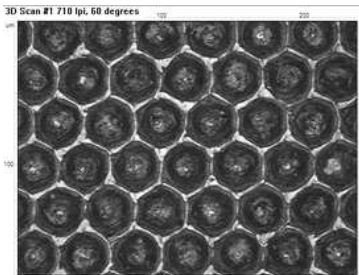
- High-intensity LEDs offer superior illumination for better cell detection
- Autofocus & Two Touch Setup
- New PIXELOC™ system, measurements are precise down to 0.25µm



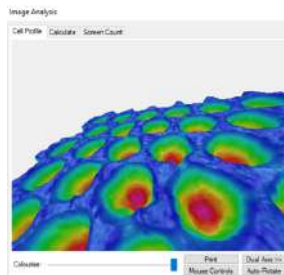
# AniCAM Workflow



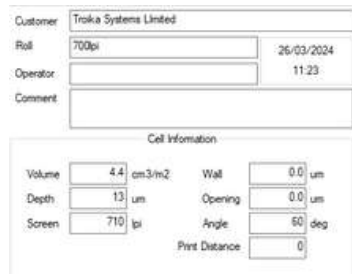
**Take up to 5 readings across the roll or cylinder to get condition and variance information**



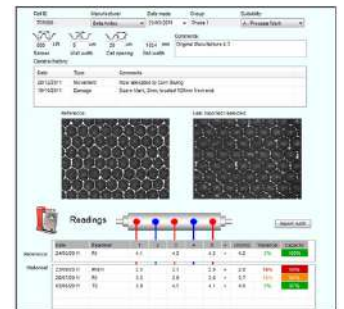
Get an automatic 3D scan in seconds



Rotatable 3D View for visual inspection



Volume and other results are shown in the Info page

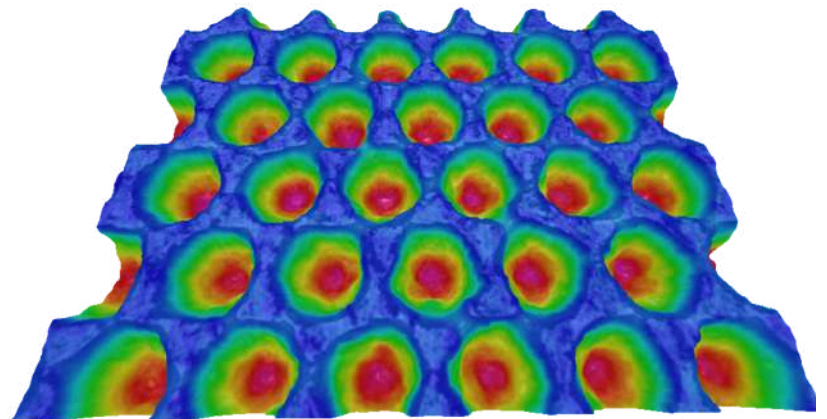


Printed as a report, transferred to Troikas Anilox Management System, or exported

# Software Packages

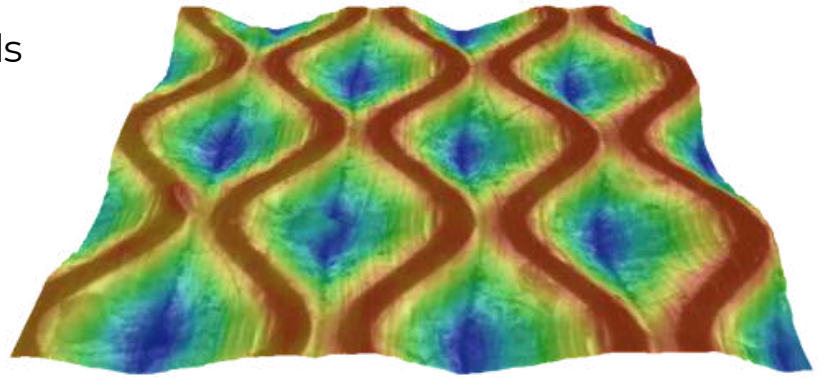
## Anilox Quality Control (QC)

Ensure optimal anilox performance with our Anilox QC software package. Analyse engraving depth, volume, and condition to achieve precise ink transfer and consistent print quality.



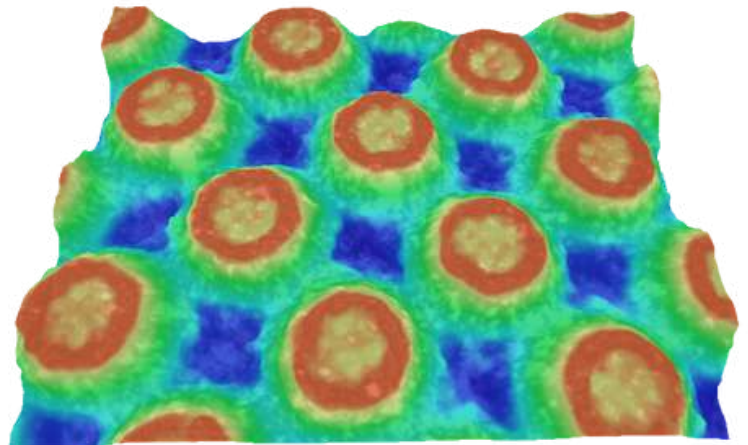
## Gravure Quality Control (QC)

Elevate gravure printing standards with our Gravure QC software package. Monitor cylinder data, assess condition, and plan maintenance to avoid costly re-engraving and downtime.



## Flexoplate Quality Control (QC)

Streamline flexoplate production with our Flexoplate QC software package. Analyse dot percentage, screen count, and plate condition to optimize ink usage and minimise waste.



# Database Options

Gain full control with our **Anilox Management System (AMS)** and **Cylinder Management System (CMS)** packages.

Offering detailed information on each roll in your printer's inventory. Simplify your roll and cylinder management – trust **AMS** and **CMS** for comprehensive data, history tracking, and visual insights for every roll in your inventory.

Roll ID: TR1000 | Manufacturer: Beta Anilox | Date made: 23/03/2011 | Group: Press 1 | Suitability: A - Process Work

Screen: 600 LPI | Wall width: 5 um | Cell opening: 20 um | Roll width: 1024 mm

Comments: Original Manufacture 4.3

Date	Type	Comments
20/12/2011	Movement	Now allocated to Corn Gluing
19/10/2011	Damage	Score Mark, 3mm, located 120mm from end

Reference: [Image of reference screen pattern] | Last imported / selected: [Image of imported screen pattern]

Readings: [Gauge showing 5 measurement points]

Date	Examiner	1	2	3	4	5	=	cm <sup>3</sup> /m <sup>2</sup>	Variance	Capacity
Reference: 24/03/2011	PJ	4.1	4.2	4.2	4.2	4.2	=	4.2	2%	100%
Historical: 23/09/2011	Phil H	2.5	3.1	3.1	2.9	2.9	=	2.8	19%	68%
20/07/2011	PJ	3.5	3.9	3.9	3.8	3.8	=	3.7	10%	90%
03/05/2011	TC	3.9	4.1	4.1	4.1	4.1	=	4.0	5%	97%

# Hardware Options

## MagneCAM

Position an AniCAM HD™ *Plus* on steel cored cylinders/rolls rotated at any angle, incorporating magnetic legs and special internal drive system. Enables measurement on press, where access is difficult.

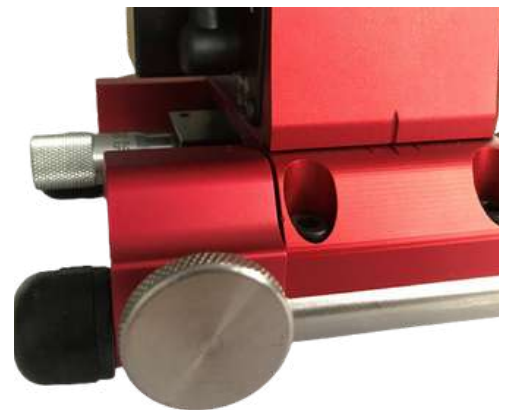


## X-Axis Micro Adjustment

The X-Axis Micro-Adjuster option allows users to laterally move the analysis head of the camera by up to 10 mm ( $\pm 5$  mm), aiding in the detection of single line engravings with precision.

## Y-Axis Micro Adjustment

The Y-Axis adjustment operates the wheels of the AniCAM's feet. This unique feature ensures a constant distance of the entire measuring area to the camera, regardless of the amount of movement



If you can't **measure** it,  
you can't **control** it.

+44 (0)1793 766355  
[www.troika-systems.com](http://www.troika-systems.com)  
[info@troika-systems.com](mailto:info@troika-systems.com)