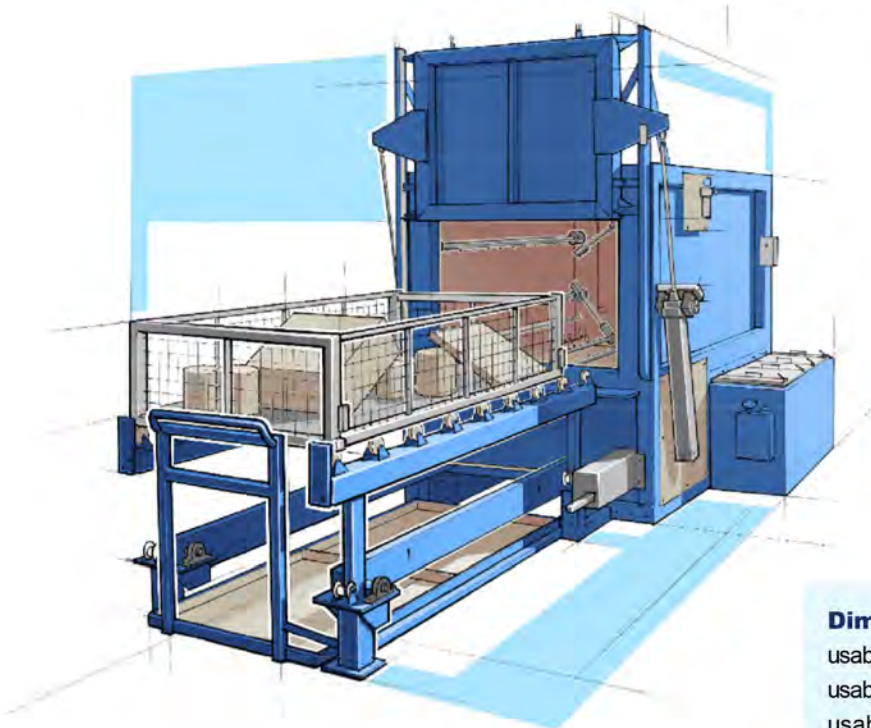




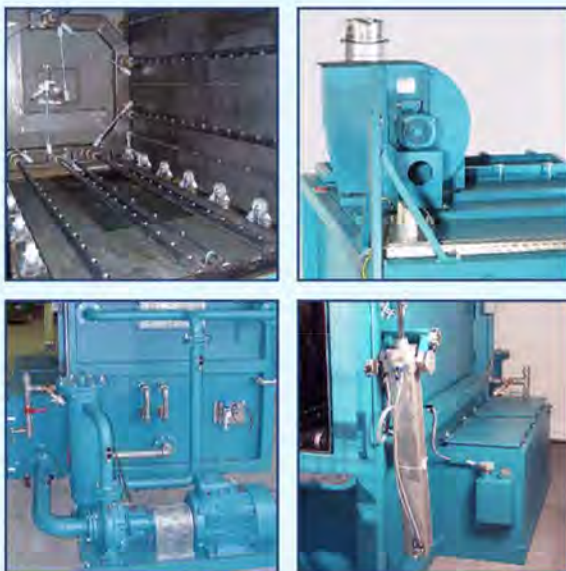
Washing machine Type 310

Cleans printing press parts such as ink pans, ink containers, doctor blades and other parts with solvent or with alkaline water-based cleaners. Good cleaning results due to an oscillating spraying system with a powerful washing pump. High loading capacity. The solvent tank is separated from the washing chamber; hence emissions are considerably reduced. The machine can be adapted to various tasks with the appropriate accessories. The solvent washing machine is type-examined and explosion-proof (category 1/2) in accordance with ATEX.



Dimension:

usable width: 1000 mm
 usable height: 800 mm
 usable length: 2000 / 2500 / 3000 / 3500 / 4000 mm



Items to be washed



cleaning process



cleaning agents



REPRESENTED IN THE U.S. BY:



Daetwyler

Max Daetwyler Corporation
 13420 Reese Blvd. West
 Huntersville, NC 28078

Tel: 704-875-1200
 Fax: 704-875-0781
 E-Mail: cleaningtech@daetwyler.com