

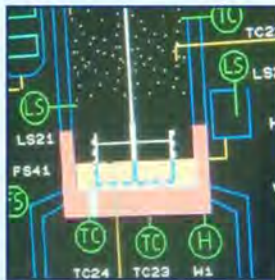
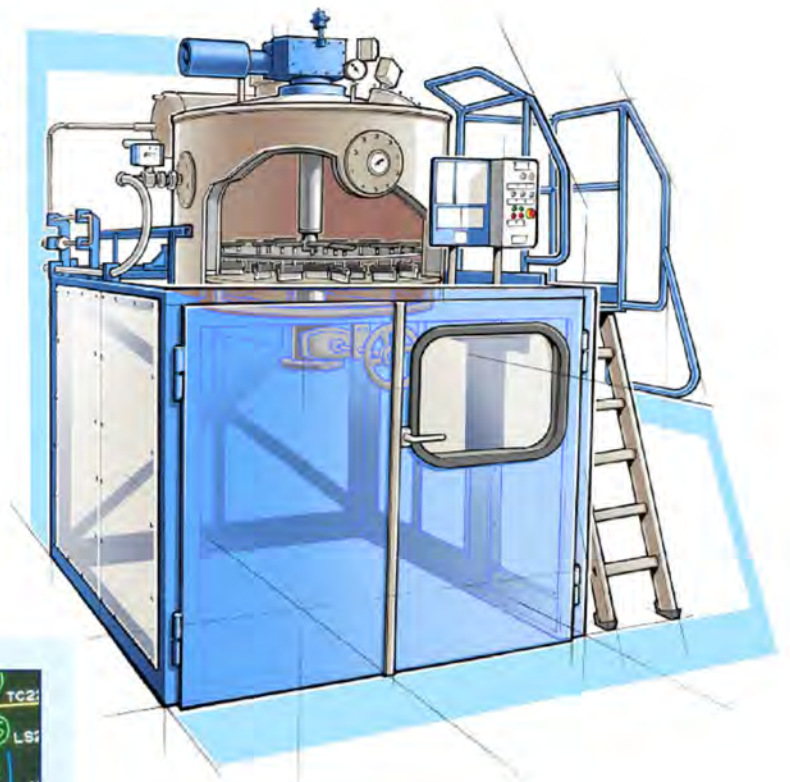


Distillation unit Type ROTomaX

recovers washing solvent and washing fluids and treats ink residues in a cylindrical distillation boiler featuring a steam-heated floor. The unit is designed for batch operation and continuous operation. High-boiling solvents can be distilled with the available vacuum technology. An agitator/scrapper system rotating slowly in the boiler permanently stirs the contents, keeps the heating surfaces clean to ensure an optimum heat transfer and, at the end of distillation, automatically discharges the residue through the open discharge valve at the bottom of the boiler. With the type-examined agitator/scrapper system and other safety-related details, the unit meets ATEX requirements.

Distillation output*:

| | |
|------------------|---------------|
| Model 15 | » 45-90 l/h |
| Model 20 | » 60-120 l/h |
| Model 30 | » 90-180 l/h |
| Model 50 | » 150-300 l/h |
| Model 75 | » 225-450 l/h |
| Model 110 | » 330-660 l/h |



media to be distilled



* (recovery rate varies depending upon type of solvent and solvent contamination.)

REPRESENTED IN THE U.S. BY:



Max Daetwyler Corporation
13420 Reese Blvd. West
Huntersville, NC 28078

Tel: 704-875-1200
Fax: 704-875-0781
E-Mail: cleaningtech@daetwyler.com